

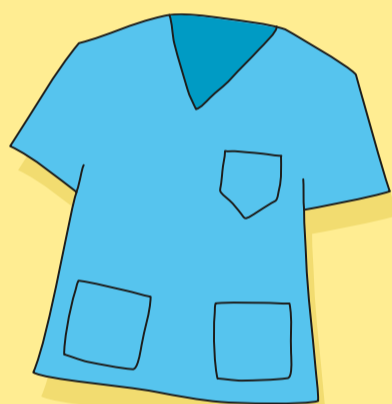
Riconoscere

il personale del Meyer

**Medici
Psicologi
Farmacisti**



**Tecnici sanitari
di laboratorio**



Infermieri



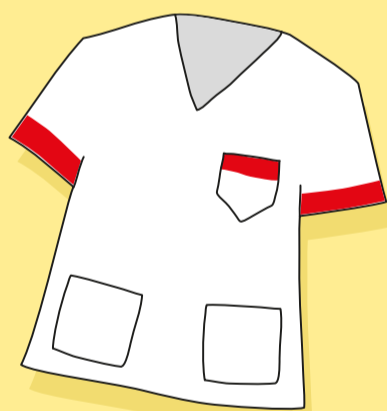
**Coordinatori
infermieristici**



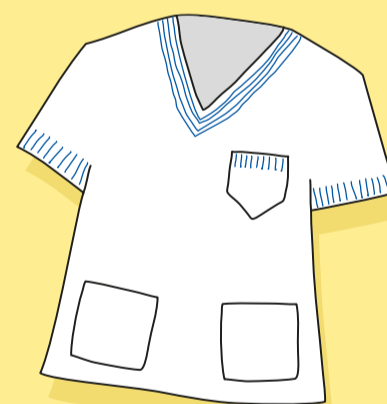
**Tecnici sanitari
di riabilitazione**



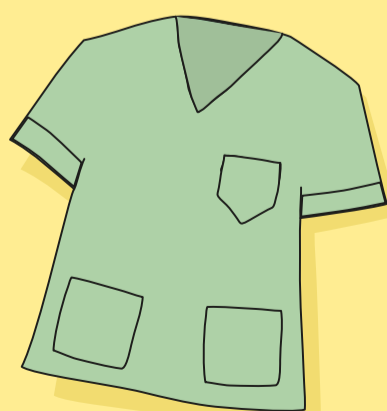
**Infermieri di flusso
pronto soccorso**



Ostetriche



**Operatori socio-sanitari
Operatori tecnici
addetti all'assistenza**



Bed management



Receptionist



www.meyer.it